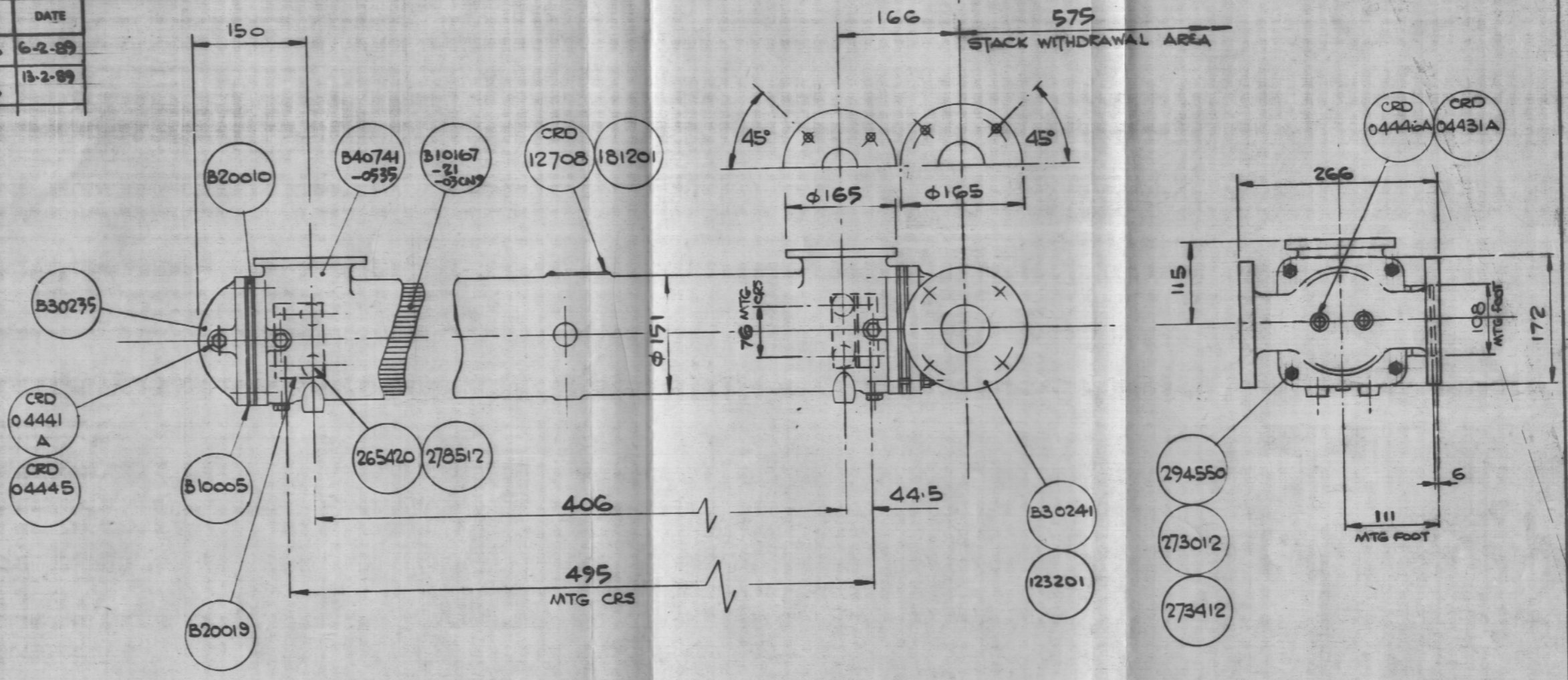


ISS.	MODIFICATION	E.I.	DATE
2	HANDING CHANGE RTZ WAS RTY	15416	6-2-89
3	RETURN COVER TURNED THRU 90° OR DRAIN PLUG TO BE AT 5TH POSN.	15423	13-2-89



SHELL FACINGS : $\phi 50$ BORE, 4 HOLES TAPPED M16 x 22 DEEP ON 125 PCD.
 FLOW COVER FLANGES: $\phi 50$ BORE, 4 HOLES $\phi 18$ ON 125 PCD
 DRAIN & VENT BOSSES: $\frac{3}{8}$ " BSP. - (FIXED END COVER $\frac{1}{2}$ " BSP)
 MOUNTING BOSSES (SHELL): M12 x 19 DEEP
 MOUNTING HOLES (FEET): 4 HOLES $\phi 14$

PRESSURE TEST THROUGH & OVER TUBES 14 bar
 PAINT TO HTE/CTS(M)/001

SPEC N°
0529

COVRAD
 1989

WHOSE PRODUCTS ARE THE SUBJECT OF PATENT PROTECTION IN THE UNITED KINGDOM & PRINCIPAL COUNTRIES OF THE WORLD, THIS DRAWING & ALL INFORMATION OR DESCRIPTIVE MATTER SET OUT THEREIN ARE CONFIDENTIAL & COPYRIGHT & MUST NOT BE DISCLOSED, LOANED, COPIED OR USED FOR MANUFACTURING, REPRODUCING OR ANY OTHER PURPOSES WITHOUT THE PRIOR & WRITTEN CONSENT OF THE OWNERS STATED.

COVRAD
 511 HENRY PARKES ROAD,
 CANLEY, COVENTRY, CV5 6BN.
 TEL 0226 76944 TELEX 31848

THREADS:-
 UNIFIED TO BS 1580 CLASS 2
 BSP TO BS 21
 METRIC TO BS 3643 CLASS 6H/6g

TOLERANCE EXCEPT WHERE STATED:
 WHOLE NUMBERS & ONE DECIMAL PLACE : ±0.05
 TWO DECIMAL PLACES : ±0.02
 START DIMENSION TO HOLES : ±0.02
 HOLE CENTRE DIMENSIONS : ±0.02
 HOLE Ø : ±0.02
 ARE TRUE POSITION

DRN.	DATE	MAT'L	SCALE	TITLE
AG	10.1.89	C1 SWELL + END BOSSES AL BR T/PLATES CU W TUBES	N.T.S.	G.A. $\phi 135$ COOLER X535 EFFECTIVE LENGTH (D&R)
APPD.	DATE	WEIGHT		
		60 kg approx		

THIRD ANGLE PROJECTION				DRG. No.
3	2	1	ISSUE	B20717